

FEATURES

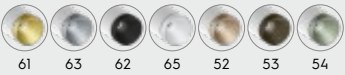
- High end aluminum heatsink with a unique elegant design
- Illuxtron patented optical lens system that makes pin-hole light possible
- Anti glare cap that ensures no stray light. The total light opening is only 8mm!
- USB-C charger



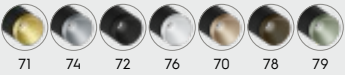
**Bartenbach**  
lighting optics

COLOURS

Available colours:



Nr	Housing	Ring
	RAL 9016	
XX=61	Matt white	Gold
XX=63	Matt white	Silver
XX=62	Matt white	Black
XX=65	Matt white	White
XX=52	Matt white	Beige
XX=53	Matt white	Bronze
XX=54	Matt white	Green



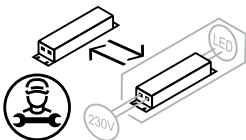
Nr	Housing	Ring
	RAL 9005	
XX=71	Matt black	Gold
XX=74	Matt black	Silver
XX=72	Matt black	Black
XX=76	Matt black	White
XX=70	Matt black	Beige
XX=78	Matt black	Bronze
XX=79	Matt black	Green

Pointer Spot WL LV  
Adjustable

SPECIFICATIONS

Beam angle (FWHM)	35° (45° FWTM) / 60° (80° FWTM)
Fixture material	Housing: Die cast aluminium
Environment	Indoor
IK rate	IK10
Operating temperature (Ta)	-20°C / +45°C 1
Safety marks	EN60598 / EN62031 / EN62471
EMC compliance	EN55015
Colour consistency (SDCM)	MacAdam step 3
Warranty	7 years * (within the European Union and the countries of the Free Trade Association for products delivered after 1 May 2015)
Energy class	These products contain a light source of energy efficiency class F (2700K/3000K) and class E (4000K)

This luminaire contains built-in LED lamps. There are no exchangeable parts inside the luminaire. EU 874/2012



**POINTER SPOT WL LV** (dimmable - incl. individual power supply)

**CRI93 220-240V**

**ITEM SPECIFICATIONS (PART A)**

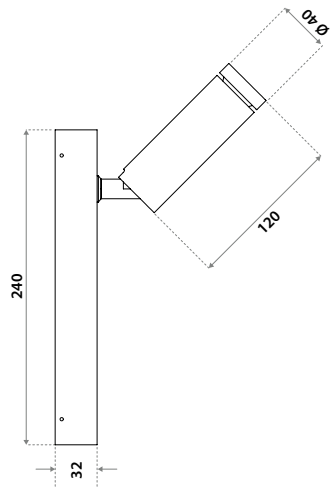
Description	Item code	Input	W	Lm	Lm/W	CRI (typ.)	UGR	Pf	Ripple	Inrush current	B-16A Fuse
Pointer Spot WL LV 35° 75 Lm 2700K CRI93 No dim	0W3W03XXLU02	220-240V	3,3	75	23	93	3.2	0.95	<3%	5A 50µS	50 pcs
Pointer Spot WL LV 35° 100 Lm 3000K CRI93 No dim	0W3W03XXLV02	220-240V	3,3	100	30	93	4.2	0.95	<3%	5A 50µS	50 pcs
Pointer Spot WL LV 35° 125 Lm 4000K CRI93 No dim	0W3W03XXLW02	220-240V	3,3	125	38	93	4.9	0.95	<3%	5A 50µS	50 pcs
Pointer Spot WL LV 60° 125 Lm 2700K CRI93 No dim	0W3W03XXLX02	220-240V	3,3	125	38	93	14.9	0.95	<3%	5A 50µS	50 pcs
Pointer Spot WL LV 60° 150 Lm 3000K CRI93 No dim	0W3W03XXLY02	220-240V	3,3	150	46	93	15.5	0.95	<3%	5A 50µS	50 pcs
Pointer Spot WL LV 60° 175 Lm 4000K CRI93 No dim	0W3W03XXLZ02	220-240V	3,3	175	53	93	16.1	0.95	<3%	5A 50µS	50 pcs

**ITEM SPECIFICATIONS (PART B)**

Description	Safety class	Energy class	Weight	Dimensions single carton	Quantity per carton	Expected Lifetime			Reported Lifetime*		
						L70B10	L80B10	L90B10	L70B10	L80B10	L90B10
Pointer Spot WL LV LV 2700K CRI93	I	F	745 gr	310x180x60 mm	42 pcs	177.000 hrs	113.000 hrs	51.000 hrs	>102.000 hrs	>102.000 hrs	51.000 hrs
Pointer Spot WL LV LV 3000K CRI93	I	F	745 gr	310x180x60 mm	42 pcs	177.000 hrs	113.000 hrs	51.000 hrs	>102.000 hrs	>102.000 hrs	51.000 hrs
Pointer Spot WL LV LV 4000K CRI93	I	E	745 gr	310x180x60 mm	42 pcs	177.000 hrs	113.000 hrs	51.000 hrs	>102.000 hrs	>102.000 hrs	51.000 hrs

All values are measured at 230V (+/- 7%). \*Based on 17.000hrs of LM80 testing at 700mA and a Tc85 °C.

**DIMENSIONS**



POINTER SPOT WL LV (dimmable - incl. individual power supply)

CRI82 220-240V

ITEM SPECIFICATIONS (PART A)

Description	Item code	Input	W	Lm	Lm/W	CRI (typ.)	UGR	Pf	Ripple	Inrush current	B-16A Fuse
Pointer Spot WL LV 35° 175 Lm 2700K CRI82 No dim	0W2703XXLU02	220-240V	3,3	175	53	82	6.1	0.95	<3%	5A 50µS	50 pcs
Pointer Spot WL LV 35° 200 Lm 3000K CRI82 No dim	0W2703XXLV02	220-240V	3,3	200	61	82	6.6	0.95	<3%	5A 50µS	50 pcs
Pointer Spot WL LV 35° 225 Lm 4000K CRI82 No dim	0W2703XXLW02	220-240V	3,3	225	68	82	7.0	0.95	<3%	5A 50µS	50 pcs
Pointer Spot WL LV 60° 225 Lm 2700K CRI82 No dim	0W2703XXLX02	220-240V	3,3	225	68	82	16.9	0.95	<3%	5A 50µS	50 pcs
Pointer Spot WL LV 60° 250 Lm 3000K CRI82 No dim	0W2703XXLY02	220-240V	3,3	250	76	82	17.3	0.95	<3%	5A 50µS	50 pcs
Pointer Spot WL LV 60° 275 Lm 4000K CRI82 No dim	0W2703XXLZ02	220-240V	3,3	275	83	82	17.6	0.95	<3%	5A 50µS	50 pcs

ITEM SPECIFICATIONS (PART B)

Description	Safety class	Energy class	Weight	Dimensions single carton	Quantity per carton	Expected Lifetime B10 reported (25°C)		
						L70B10	L80B10	L90B10
Pointer Spot WL LV 2700K CRI82	I	F	745 gr	310x180x60 mm	42 pcs	>60.000 hrs	>60.000 hrs	>60.000 hrs
Pointer Spot WL LV 3000K CRI82	I	F	745 gr	310x180x60 mm	42 pcs	>60.000 hrs	>60.000 hrs	>60.000 hrs
Pointer Spot WL LV 4000K CRI82	I	E	745 gr	310x180x60 mm	42 pcs	>60.000 hrs	>60.000 hrs	>60.000 hrs

All values are measured at 230V (+/- 7%)

DIMENSIONS

